



CANAL TRAIL (SENTIER DU CANAL)

Guenrouët



12 km



3 hours



Quai Saint-Clair car park, near the Tourist Office - Guenrouët

Access

between Guenrouët and Plessé on the D2, parking alongside Nantes-Brest canal



Pays de Pont-Château/Saint-Gildas-des-Bois Tourist Office

17 rue des Forges - Saint-Gildas-des-Bois +33 (0)2 40 01 40 10



THE NANTES-BREST CANAL

Completed in 1842, the Nantes-Brest Canal winds its way across 364 km of land and has 238 locks.

The barges transported foodstuffs and materials such as sand from the Loire, but they were soon replaced by the development of the railways and the road. In 1977, the Mistral was the last boat to carry goods on the canal.

The canal and the towpath, as an area of greenery on the water's edge, have become the setting for pleasant holidays and walks.

Let yourself be carried away by the peaceful charm of the Nantes-Brest canal. Once past the Quai Saint-Clair and its activities for the whole family, the atmosphere becomes wilder once again, allowing you to observe the wealth of the fauna and flora surrounding the Isac. On the other side of the river, the route winds through the countryside without losing sight of the canal in the distance.



From the car park, walk up the steps to the Saint-Clair bridge, cross over at the pedestrian crossing and go down the path to reach the Nantes-Brest canal. Take the towpath that follows the banks of the Isac to Melneuf. From here, you can make a detour along the canal to discover the Melneuf lock and the lockhouse.

- 1 Then take the bridge over the canal. Pass by Riavaud chapel and take the first road on the right towards Les Rochaux.
- 2 Carefully follow the RD 102 on the right-hand side and very quickly leave it by turning towards Croix-Blanche. At Croix-Blanche, turn right towards Ongle.
- 3 Just before the farm buildings, turn left.
- 4 Turn right onto the path and continue straight on towards the village of Guenrouët.
- 5 When you arrive in front of the houses, turn right and then left onto Rue de l'Abbé Verger and continue straight ahead. Please note, for cyclists, on a one-way street you are obliged to get off your bike and walk. Behind the church, turn right and then left to take the small sunken path known as the 'stagecoach path'. This will take you back to the Quai Saint-Clair.



TO SEE ON THE WAY...

- the Quai Saint-Clair leisure complex
- the ruins of the Château de Carheil and the chapel
- the fauna and flora of the canal
- Melneuf lock
- the Chapel of Riavaud

TO GO FURTHER...

- an informative booklet to discover the life and history of the canal free of charge at the Tourist Office.



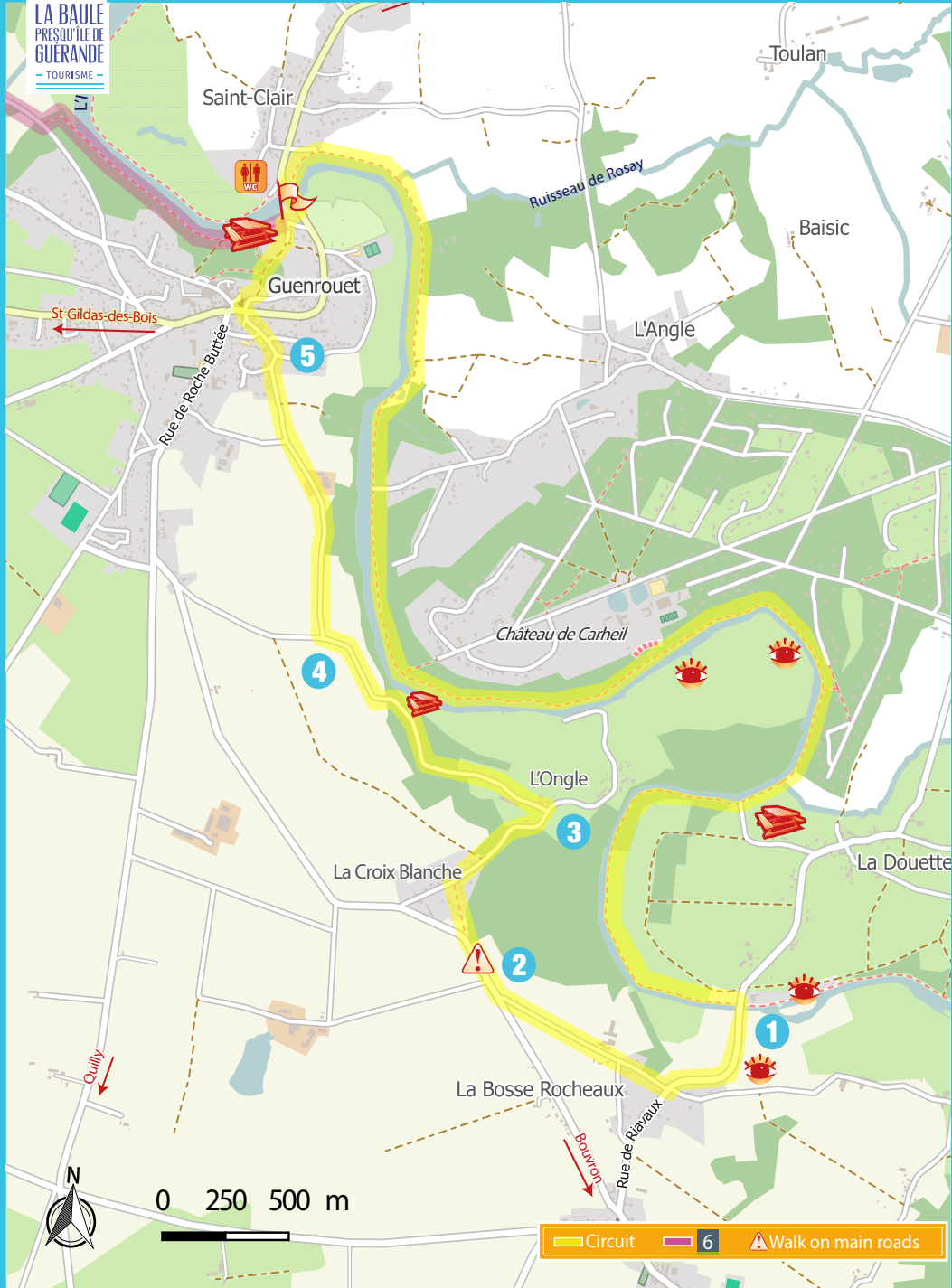


12 km



3 hours

LA BAULE
PRESQU'ÎLE DE
GUÉRENDE
TOURISME



Circuit
6
⚠ Walk on main roads